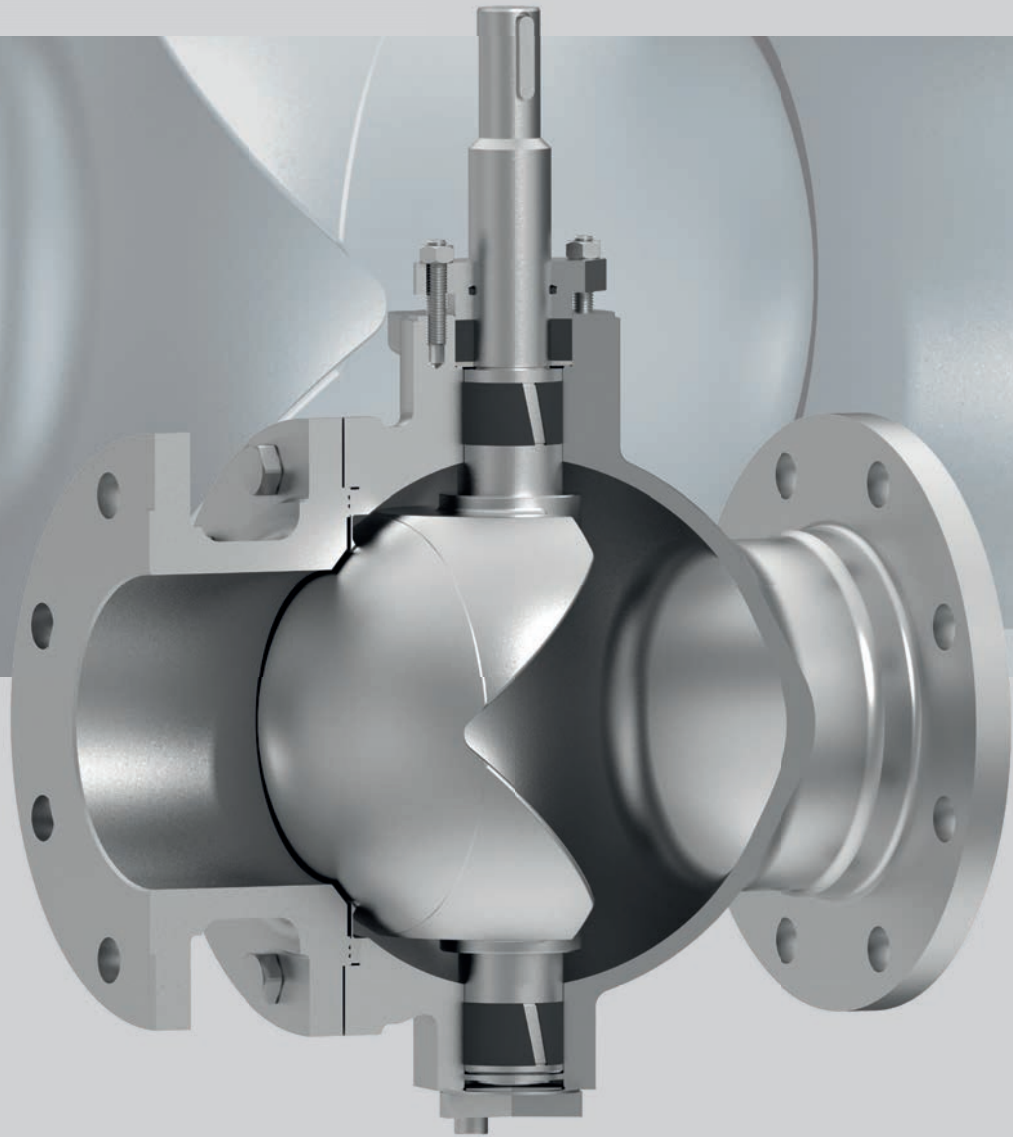


# PALTRA®-V

SEGMENTED BALL VALVE



Your valve made by ARI®  
[ari-armaturen.com](http://ari-armaturen.com)



# PALTRA® V

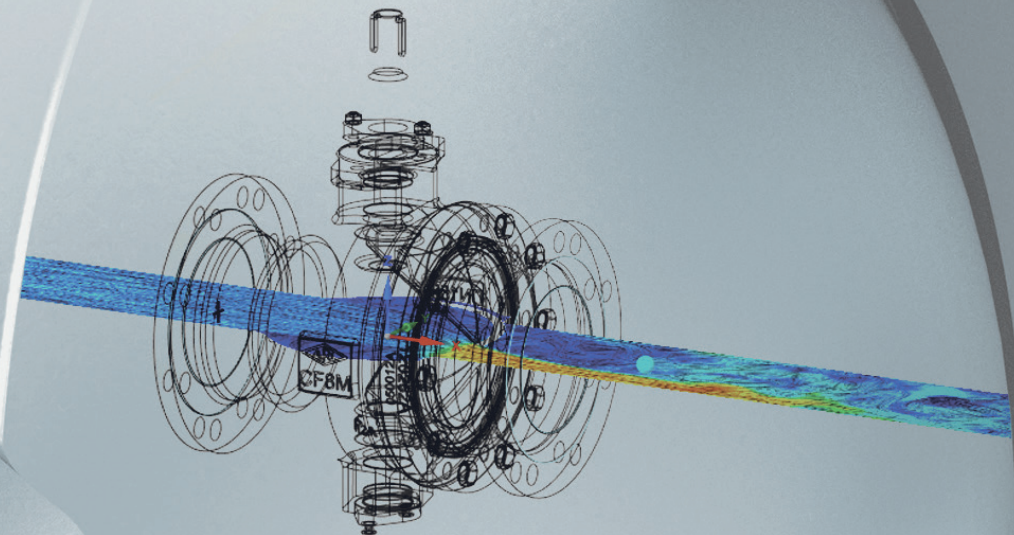
Tight-closing control valve with particularly high rangeability



**PALTRA®-V**  
**Wafer type**  
Figur No.: 52.501  
Figur No.: 55.501



**PALTRA®-V**  
**Double flange**  
Figur No.: 52.502



High KVs value of the segmented ball valve  
with a low pressure drop at the same time.

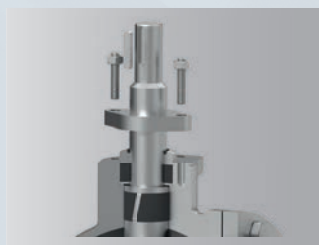
## The new PALTRA®-V is a segmented ball valve made of stainless steel

The tight-closing segmented ball valve PALTRA®-V is ideal for fibrous or crystallizing media. For example, fibres in the media are being cut during the closing process. This cutting effect is achieved by the ball segment with the V-cut. The valve remains tight thanks to a PTFE soft seal (up to max. 200 °C) or a stellited metal seal (up to max. 260 °C). Due to the permanent contact of the ball segment and the seat ring, the ball segment cleans itself and is therefore less susceptible to deposits of the medium on the segment itself.

The PALTRA®-V is characterized by a low pressure drop, a high rangeability and high Kvs values. The segmented ball valve is available with a flanged body (PN 16) and as a wafer type (PN 16/40), both in stainless steel. The integrated stem sealing consists of a graphite packing in combination with an EPDM O-ring.

There are various operating elements that can be combined with the PALTRA®-V. These include pneumatic and electric actuators, worm gearboxes and hand levers. Combined with a pneumatic actuator and a positioner (e.g. STEVI®-POS), the result for the user is a flexible unit with a large rangeability.

**PALTRA® V**  
**Nominal pressure:** PN 16 and PN 40  
**Nominal diameter:** DN 25 – DN 300  
**Body-Material:** Stainless Steel 1.4408  
**Temperature:** -40 °C up to 260 °C (- 40 °F up to 500 °F)  
**Rangeability:** 100:1



The **stem sealing** consists of a graphite packing in combination with an EPDM O-Ring.



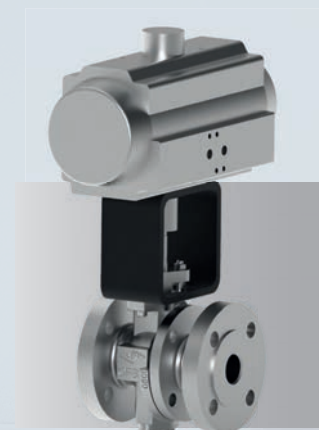
The graphite gasket is also available for critical operating conditions.



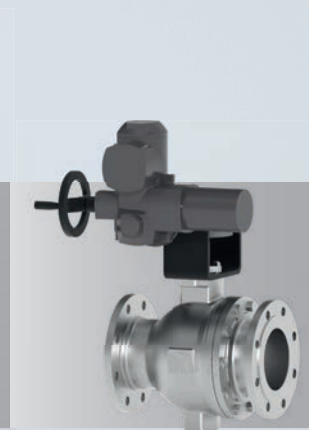
**PTFE soft sealing.** Tight closing for temperatures up to 200°C (392°F)



**Stellited metal seat ring.** Leakage class D according to DIN EN 12266 up to 260°C (500°F).



Pneumatic actuator



Electrical actuator



Worm-gear



Hand lever



# ARI® PRODUCT DIVERSITY

## Control



**Control valves**  
STEVI® Pro  
(Series 422/462, 470/471)



STEVI® Vario  
(Series 448/449)



STEVI® Smart (Series 423/463,  
425/426, 440/441, 450/451)



**Control without auxiliary power**  
PREDU® / PREDEX® /  
PRESO® / TEMPTROL®

## Isolation



**Process valves**  
ZETRIX®  
**High Performance-Valves**  
ZEDOX®



**Butterfly valves**  
ZESA®/GESA®/ZIVA®



**Bellows sealed valves**  
FABA® Plus, FABA® Supra I/C



**Stop valves with gland seal**  
STOBU®

## Safety



**Safety valves (DIN)**  
SAFE



**Safety valves**  
SAFE TCP



**Safety valves (API 526)**  
REYCO® R



**Safety valves (ANSI)**  
REYCO® RL

## Steam Trapping



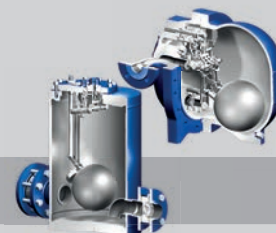
**Steam traps CONA®**  
(mechanical ball float /  
thermostatic bimetallic and  
membrane / thermodynamic),  
**monitoring systems**  
CONA® Control



**Manifolds**  
CODI® for collecting  
and diverting  
purpose



**Steam traps with multi-  
valving technology CONA®**  
“All-in-One” (incl. stop valve,  
inside strainer, back-flow  
protection, drain valve)



**Mechanical pump systems**  
CONLIFT®, CONA® P

## Engineered Systems



e.g. pressure reducing station  
PREsys®



e.g. heat exchanger  
ENCOsys®



e.g. condensate return system  
CORsys®



e.g. feedwater tank  
with deaerator dome

**Profit from diversity made by ARI.**  
**Please don't hesitate to ask for more information!**



Your valve made by ARI®  
ari-armaturen.com